



Norwood End, Ongar, CM5

BUTLER  STAG



**Nestled in the heart of the highly sought-after Fyfield community, this magnificent three bedroom detached house presents an unparalleled opportunity to indulge in lavish living. With its timeless architecture, spacious interior, and elegant finishes, this property embodies the epitome of luxury.**



**Freehold**

**Asking Price £695,000**

Upon entering these brand-new homes, you are greeted by an inviting entrance hallway expertly laid in plank style Amtico flooring, that sets the tone for the entire home. The ground floor boasts energy-efficient, underfloor heating, and both the lounge and dining areas have their own set of bi-folding doors to spacious rear gardens. A further reception room can be found at the front of the property offering versatile living accommodation for all. The kitchen is finished in an elegant two-tone colour pattern with taupe cabinetry to complement the neutral walls and quartz worktops, finished with high-quality integrated appliances.

The first floor is equally impressive, featuring two double bedrooms complimented by a large family bathroom. The master bedroom is a true sanctuary, featuring a spacious layout, plush carpeting, and a feature window offering unbroken views over the Essex countryside. Both rooms can serve as cosy spaces for relaxation, productive home offices, or versatile spaces to cater to your individual needs including walk-in dressing rooms.

The houses are approached via a freshly laid driveway, with off-street parking for at least two vehicles. The remaining frontage features planting beds for soft landscaping. The rear gardens have fresh lawns and a large tiled patio space, perfect for entertaining.

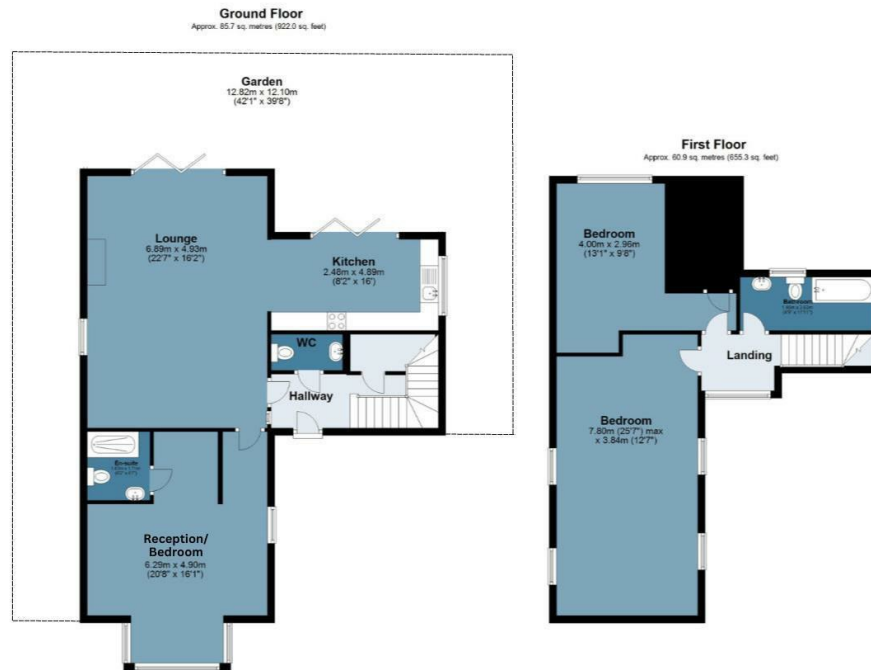
Situated within charming village of Fyfield, located near Ongar, this scenic setting offers a perfect blend of countryside tranquility, and convenient access to local amenities and road & rail links. Nearby Ongar High Street features a variety of shops, cafes, and restaurants, as well as easy access to the A14 and M11, facilitating an easy commute. The surrounding areas boasts beautiful rural landscapes and local pubs & restaurants, including the hugely popular Smiths, The Dog & Pickle in Moreton, and The Queens Head at Fyfield.



## Norwood End

Approx. Gross Internal Area 146.5 sq. metres (1577.3 sq. feet)

BUTLER & STAG



Measurements are approximate and for illustration purposes only. While we do not doubt the accuracy and completeness, we advise you conduct a careful independent assessment of the property to determine monetary value  
© @modephotouk www.modephoto.co.uk

Prepared on behalf of Butler & Stag  
Land and New Homes

If you have any further questions  
please don't hesitate to contact us on  
the details below

BUTLER & STAG

📞 020 4542 2999

🏠 12 Coppice Row Theydon Bois, Essex, CM16 7ES

✉️ enquires@butlerandstag.com

www.butlerandstag.uk

IMPORTANT NOTICE - These particulars have been prepared in good faith and they are not intended to constitute part of an offer or contract. We have not performed a structural survey on this property and the services, appliances and specific fittings have not been tested. All photographs, measurements, floor plans and distances referred to are given as a guide and should not be relied upon.